



New features in BasePac 5

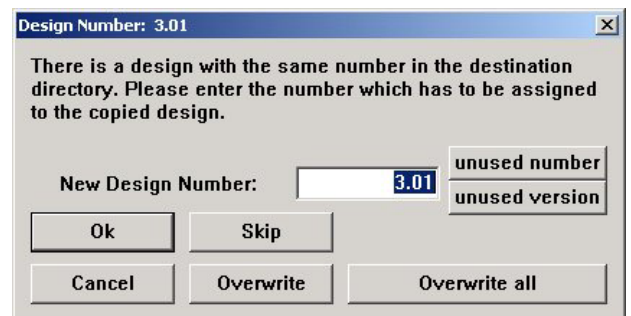
This document describes the new features which have been added to BasePac 5 compared with BasePac'21.

This is an instruction for BasePac 5 users, which have been working with BasePac'21 and want to learn more about the new features.

Design management

When copying designs in the design management, this dialog is shown if the design number is already in use in the target folder.

Now the first free number or first free version can be accessed here.



When copying from disc always the *Assign Design number* dialog is displayed. Here now the first free Design number is used if the original design number is in use.

General functions

Zoom factor

At the new operating systems Windows 2000 and Windows XP it is possible to operate with larger zoom factors. Because of this the maximum possible value for the zoom factor is now 999 if using Windows 2000 or Windows XP.

Stitch display

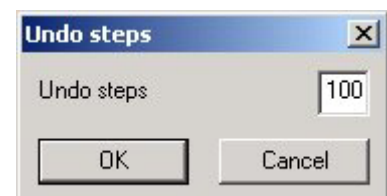
The alphanumeric Stitch display (only available with Punch or Edit option) is now dockable at the side of the working area. It has got a scroll bar which allows scrolling through the design.

Undo function

The undo function is extended to all parts. All actions changing the design can be undone and redone.

The count of steps for undo and redo can be adjusted in *Settings – Standard settings – Undo steps*.

It is possible to set up 10 to 999 Steps; the default value is 50 Steps.






Lettering

Bordered letters

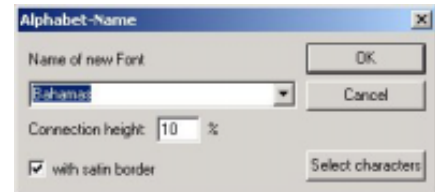
Now it is possible to make bordered letters. The border can be done as satin border or running border.

The bordering of letters is available only at TrueType fonts!

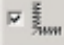
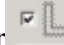
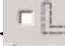
The bordering with running border can be done with every TrueType font.

To create a satin border, the font has to be prepared especially. These special fonts are displayed in the font selection with .

The pre-processing of the font is done in the Font manager by selecting the checkbox *with satin border*. The font is created with the satin border. This satin border can be optimized in the alphabet editor.



In the Text-parameter dialog you can select if the letters are filled and/or bordered.

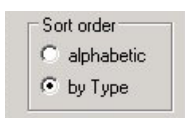
With the symbols for fill , satin border  and running border  the type can be selected. The different possibilities are only available at the corresponding fonts. The specific parameters can be selected corresponding to the selected type in the fields below. There are separate extended parameters available for fill and border. For the border also a separate needle can be selected to get 2 coloured lettering.



Font selection

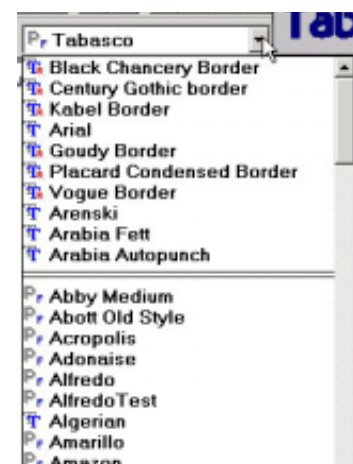
The font selection box is becoming more and more confusing because of the large amount of fonts available especially if many TrueType fonts are added.

Because most users only use a small amount of font's styles, now the 10 most recently used font styles are attached to the top of the list, separated by a double line.



The font list can be sorted by font types also. The order of sorting is TrueType fonts, GiS Fonts, Punch Fonts and at the end stitch data fonts.

The selection of the order of sorting is done in the font management.



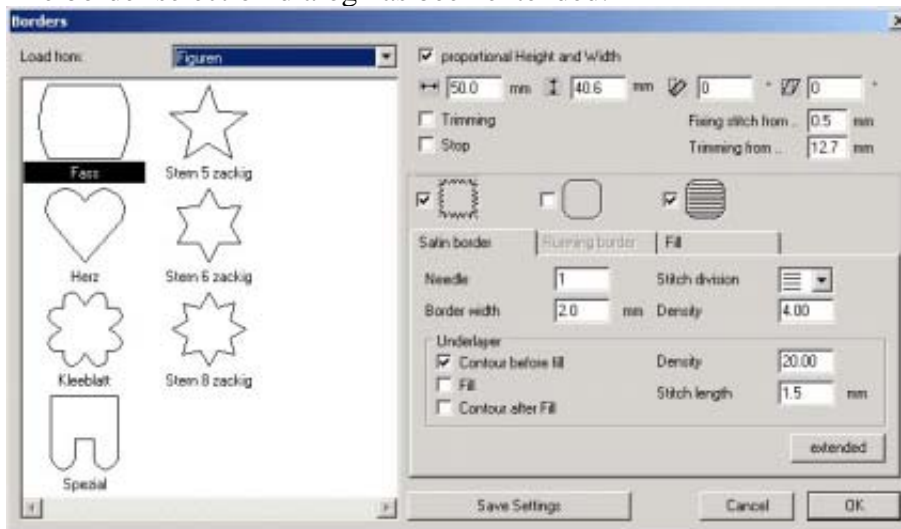


Borders

In the past borders from the library have been filled as borders only. Now they can also be used as filled areas.

With this it is possible to get a background for a design in one Step. Also the frames contour can be done as satin or running border.

The border selection dialog has been extended:



Now it can be selected, if the border and fill or only border or only fill is done. The extended parameters are also available for the borders.

Drawing mode

Freehand

The newly created freehand mode allows drawing lines to be entered more naturally. You will find a more detailed description of this function in **punch mode**.



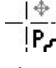
Punch mode

In punch mode the handling was improved.

Freehand mode

The new freehand mode allows the input of reference data for running stitch, fill stitch, centreline and also stitch direction and division lines as freehand lines instead of digitizing curve points. The settings for freehand mode can be found in the menu at *Settings – freehand*.

If freehand mode is active, the menu entry is marked.

Also the cursor has the added freehand symbol  anytime the input of a freehand line is possible. The input of a freehand line is done by moving the mouse with pressed left mouse key.

The following values can be changed in the freehand settings:

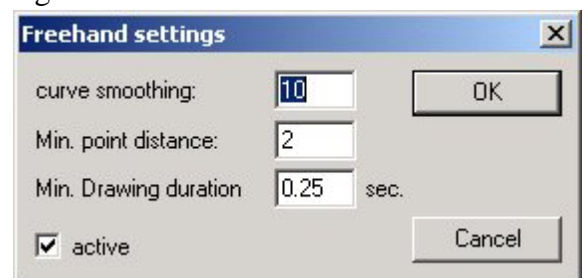
Curve smoothing: This describes how much the given line is smoothed. So the trembling of the hand while drawing can be levelled out.

Min. point distance: This is the distance 2 neighbored points will have at least. This value is related to the screen resolution and because of this independent from the zoom factor.

Min. Drawing duration: This is the time a drawing of a freehand line has to last at least to be achieved as a freehand line.

If this value is set too short, a slow mouse click can be recognised as a freehand line. If this value is set too long, a quickly drawn freehand line will not be recognized as a freehand line.

The preset values are well prepared for most users and should be changed only if necessary.



AutoScroll

With the AutoScroll function the ergonomics of punching are further improved. The current displayed section of the screen is scrolled automatically when leaving the working area.



This function works only in insert mode!

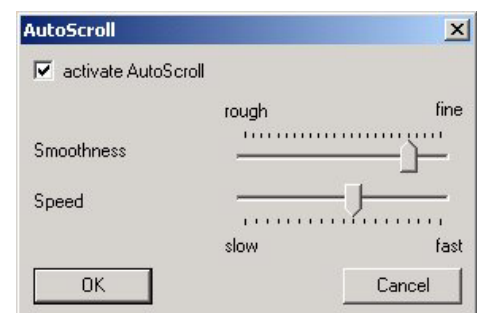
The scrolling is done as long as the mouse touches the rulers or the scrollbars. If the mouse is moved beyond these areas, the scrolling stops, so that you can use the toolbars without restriction.

If the AutoScroll function is not desired, it can be turned off generally.

The setting of the AutoScroll function is found in *Settings – Standard settings – AutoScroll*

The Smoothness defines if the movement is done in wide moves or in fine Steps; the Speed sets up how fast it scrolls.

The activation of the AutoScroll function can be seen at the changed insert cursor,  with AutoScroll;  without AutoScroll





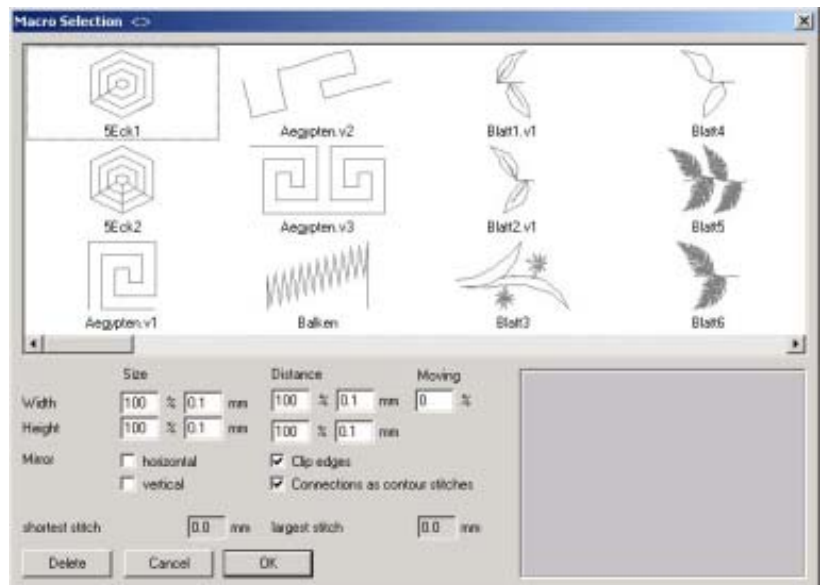
Macro Fill

The macro function, which is the repetition of stitch sequences, was extended.

It is now possible to have special functions (trimming, needle change, stop, sequin) in the macros. So it is possible to make automatic sequin sequences.

In the macro settings the parameters have been extended.

Now the distance can be set in width and in height. Before only a height distance (which is the gap between the macro lines) could be defined. The width distance creates a gap between the macros on a line. It can also be selected if the edge is clipped or not. Previously the edge was always clipped. If this function is turned off, always complete macros are done, the macro at the edge is not clipped, but it is either completely done or completely removed. With this it is e.g. possible to simulate cross stitch designs, by saving one cross stitch as a macro.



to simulate cross stitch designs, by saving one cross stitch as a macro.

The function *Connection as contour stitches* can now also be turned off and then the needed connection stitches in the area are not done along the edge but as direct jump. This gives at some macros a better view because the stitches at the edge are interfering.

If the macro contains the special function *Sequin* the *Clip edges* and *Connection as contour stitches* are automatically turned off, because with sequins the macro always has to be done completely and the contour stitches could hit into sequins.

The function *Save as macro* is moved from the *Settings* Menu to the *Block* Menu.

Stitch calculation

The stitch calculation was extensively improved. Especially at wavy step stitch the stitch density is now calculated much smoother.

Print & Statistics

In the Print & Statistics program the quick start buttons have been replaced by an improved toolbar.



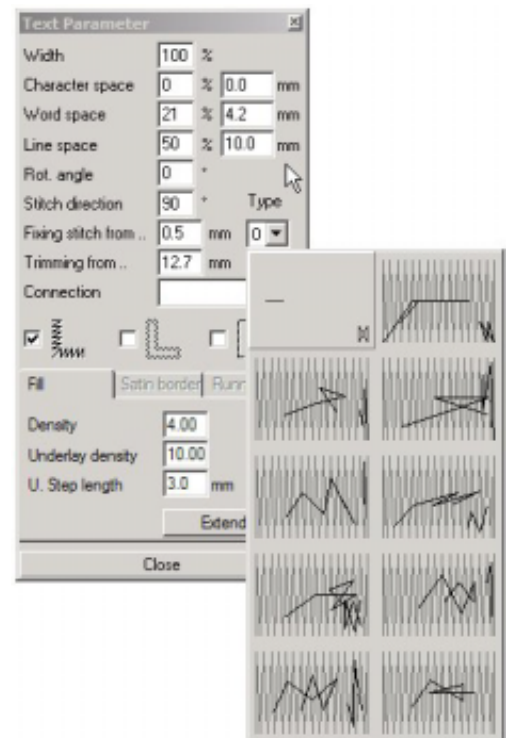
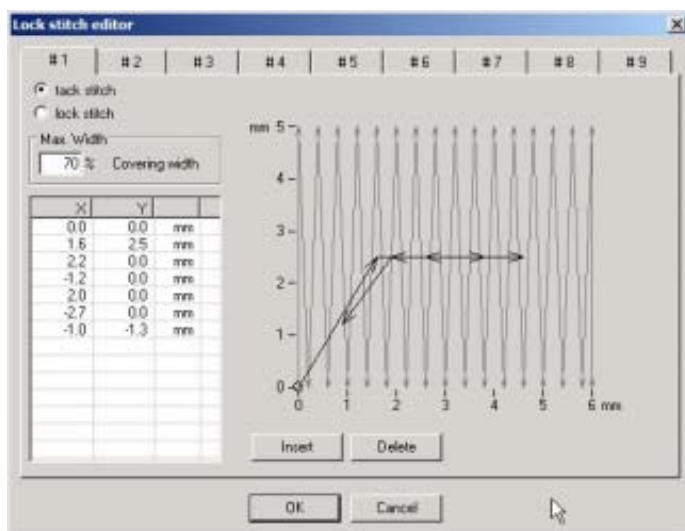
New features in BasePac 5.01

In Version 5.01 not only error corrections but also some new features have been added.

User defined Lock stitch sequences

When using TrueType fonts now different tack stitch and lock stitch sequences can be used. In the Text parameter dialog a new selection Type has been added. The different Tack and Lock stitch sequences are graphically displayed and can be selected. Also In type 0 the former sequence is available.

The tack stitch and lock stitch sequences can be edited in the Lock stitch editor, available in the menu *Settings-Standard settings*



Here the sequence for tack stitch and lock stitch can be edited separately. The tack stitch sequence correlates to position (0,0) at left bottom. The lock stitch sequence correlates to position (6,0) at right bottom.

the tack and lock sequences can be positioned in the field freely, the starting and ending point do not have to be at a specific position. With this for example the tack stitch sequence can be moved inside of the letter easily.

With these possibilities the tack stitches and lock stitches can be adjusted to any ones needs.

The selection of the Max Width ensures that the stitch sequence does not exceed the useable area.

The editing of the sequences takes place graphically with the mouse. The stitches were displayed by values for full control.

With the button *Insert* the insert mode can be selected to add stitches to the sequence.

The button *Delete* is used to remove the selected stitch.

The selected stitch is always displayed in red.