

# Activating DEMO in BasePac 8



## All methods of DEMO activation in BasePac 8

This list will enumerate all different methods to enter passwords for Demo activation in BasePac 8.

You find the dialogue for entering the passwords in:

### *Settings – standard settings – activate options*

There is a possibility to get a GiS software package for a limited period of time as a DEMO version. The DEMO version is a complete version of the program, with all available options and with the possibility to save and load designs.

As for normal operation also in DEMO mode the CodeMeter Stick is needed.

To use the DEMO version, the CodeMeter Stick has to be loaded with a specified DEMO duration.

There are several variants to get the CodeMeter Stick loaded with DEMO:

1. You get a prepared CodeMeter Stick together with your demo package. To activate the DEMO, click in passwords dialog to "Demo".
2. You have a CodeMeter Stick and an e-mail connection. You will get an <Donglenumber>.GiSCmUpdate file through e-mail to load the demo. With a double click on the <Donglenumber>.GiSCmUpdate file the demo duration is loaded to the CodeMeter Stick and BasePac 8 will be prepared for demo. When you start GiS BasePac 8 the next time the "Demo setup" dialog will be opened.

In any case BasePac 8 has to be installed at your PC!

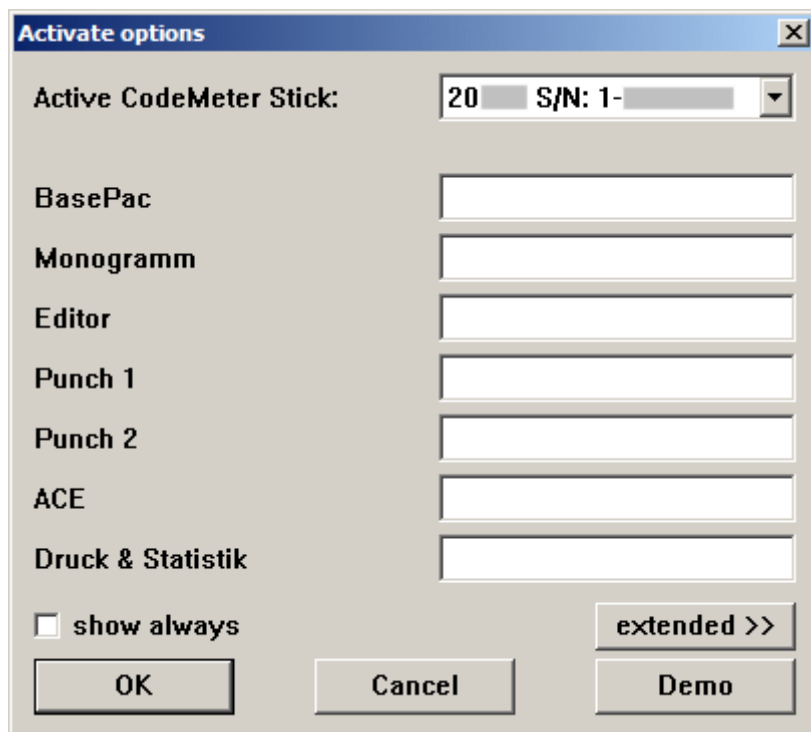
The CodeMeter Stick has to be plugged into the USB interface of your computer.

**Important hint:** Do never try to make the DEMO period of time longer, for instance by manipulating the system time of your computer. In this case a short warning will appear and if it is ignored, the remaining DEMO time will be set to zero. So you will not have any advantages.



# Activating DEMO in BasePac 8

## Activate DEMO-Mode



To activate DEMO-Mode, GiS BasePac 8 has to be switched to demo.

If no passwords had been entered, you will get the dialog for password input at program start.

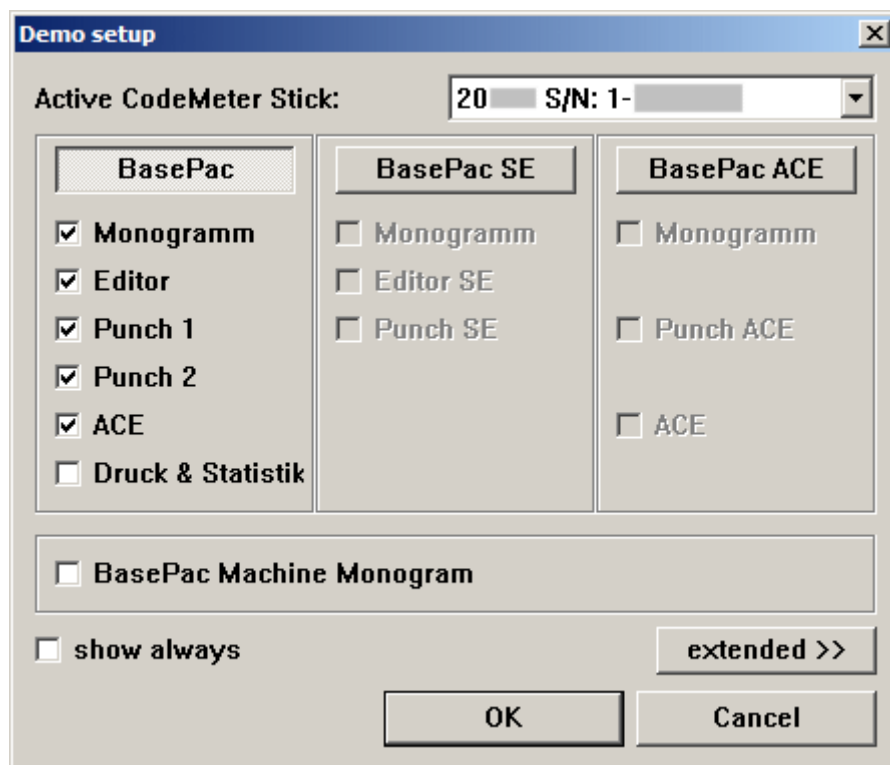
To activate demo mode please press "Demo" to open the "Demo setup" dialog.

If the CodeMeter Stick was loaded through the <Donglenumber>.GiSCmUpdate file, the "Demo setup" dialog will be opened automatically.

If an existing BasePac 8 installation has to be switched to DEMO mode, this dialog can be found in menu "Settings" submenu "Standard settings" key "activate options". In any case it is necessary to have the CodeMeter Stick loaded with demo days!

# Activating DEMO in BasePac 8

## DEMO setup



In this window you can activate all desired options. At first, you select the main group.

This can be **BasePac**, **BasePac SE** or **BasePac ACE**.

If **BasePac** is selected, the BasePac *classic* line is activated.

All additional options can be activated separately.

With **BasePac SE** the below displayed options are activated automatically. This package can be extended with options from the *classic* line. **BasePac ACE** will be activated the same way.

Selection of **BasePac Machine Monogram** activates exactly the functions of the Machine monogram package. This can not be extended, because an upgrade to a **BasePac** line is needed for extension.

After confirmation of the dialog with "OK" you can work with the **GiS BasePac** and the selected options. The **DEMO** time and days are running from the **current date**. In the headline of your worksheet the remaining days and time is displayed (in the upper left corner).

# Activating DEMO in BasePac 8



## Change demo scope in DEMO Mode

If you do not want to have all options in the DEMO mode for any reason, for instance a show, you can switch them off. Start the function "activate options" in the "settings" menu under "standard settings". In Demo mode, the "Demo setup" dialog opens automatically. You can select the preferred options there and confirm them with "OK". The functions of the removed options are not available after that. Of course you can activate the options again at any time.

## Exit Demo mode

If the demo period is finished, the DEMO mode will be closed automatically. The normal password dialog is shown and all passwords for all purchased options have to be entered. It is also possible to activate a new demo period as described above.

If you want to finish working with DEMO mode before its actual expiry, you have to deactivate **all parts** in "Demo setup" dialog and confirm with "OK". With this the DEMO Mode is closed and the passwords dialog is displayed.