

Using the GiS BasePac 7 in a network



Basics

In general the GiS BasePac software can be used in all kinds of networks which allow connections using drive letters (all WINDOWS versions). The software supports only the access with drive letters and **not** the UNC (Uni-form Naming Convention) names.

A network consists always of many participants which are connected using a bus system. Depending on their assigned job and function they are called server or client. The server is a PC, which offers the resources, i.e. hard disk drives, printers, etc. to the network. A client is a PC which makes use of the resources (hard disk capacity, printers, etc...) of the server.

In smaller networks, for example with 2 participants, a PC can be server and client simultaneously. In larger networks pure server solutions are standard that means one or more PC work as a server which administer all the data centrally.

In network operation there is to distinguish between two usage scopes:

1. Common usage of data on multiple workstations.
Is described in chapter **A**:
2. Common usage of program licenses on multiple workstations.
Is described in chapters **B**: - **D**:

Using the GiS BasePac 7 in a network



A: Access from multiple GiS BasePac Systems to common data

Example:

We have 2 PC's – PC "A" is used for punching and with PC "B" the designs are to be sent.

The whole data administration should be stored on PC „A“, and client „B“ should be able to access to the design data stored on "A". On PC "A" the GiS BasePac and the Punching options and on PC "B" just the GiS BasePac is installed. Both computers need their own CodeMeter Stick.

To allow PC "B" the access to the GiS BasePac data administration on PC "A", a network drive connection between the computers has to be established. First you have to create a network share on the drive where the data is stored on PC "A". In Windows you can do it in the "Windows-Explorer" clicking the right mouse key on the drives entry and select "sharing" and "sharing as". After that you can connect at PC "B" the drive you shared at "A" with the function "Map network drive" in the "Tools" menu. You can select the drive you defined that way in the BasePac administration like any local drive and so it can be used for the access to PC "A".

Please notice that each client who wants to access to the GiS data administration on a server needs an own license for the GiS BasePac and also his own, local CodeMeter Stick.
(See chapter **B:** to **D:** for using network licenses)

If the server is exclusively used for data administration and the access is just done over the network, you need *no* GiS BasePac and *no* CodeMeter Stick at this server. If you install this kind of server solution, you can follow the steps described in the example; the drive on the server has to be mapped with every client. In most cases it makes sense to choose the letter of the drive in a way, that all clients can use the same letter.

Using the GiS BasePac 7 in a network



B: Access from multiple GiS BasePac Systems to one CodeMeter Stick

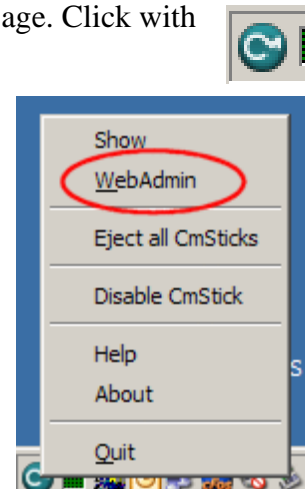
Example:

You want to run GiS BasePac on multiple PC's, but only one license (one CodeMeter Stick) is available. This is principally possible, but you can run the program only on **one** PC at a time.

To have this, please do the following steps:

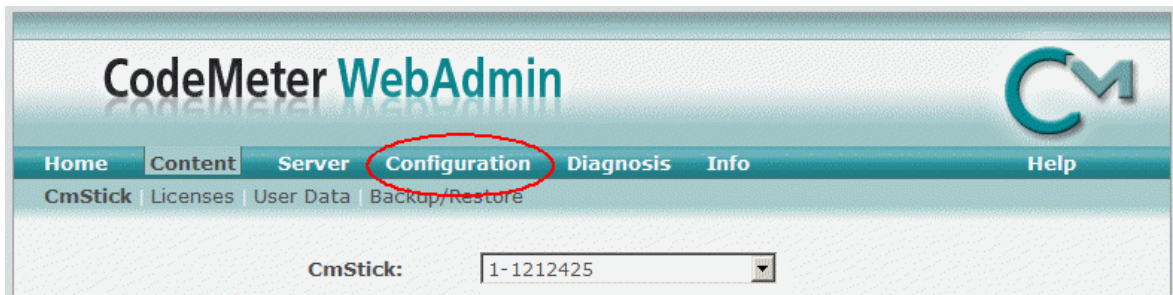
1. You install GiS BasePac on **all** PC's where you want to use it.
2. Share your drives the same way as described in the example (A:) above.
3. Define one PC as server and connect the CodeMeter Stick to this PC. If the CodeMeter Stick is installed to a separate server which does not need the BasePac software, only the CodeMeter driver has to be installed. You can find the CodeMeter driver on the installation CD in "Tools", "WibuKey CodeMeter".
4. On the Server PC the CodeMeter Stick is shared for network usage. Click with the right mouse button to the CM icon in the taskbar.

The menu on the right, where you select **WebAdmin**, appears.

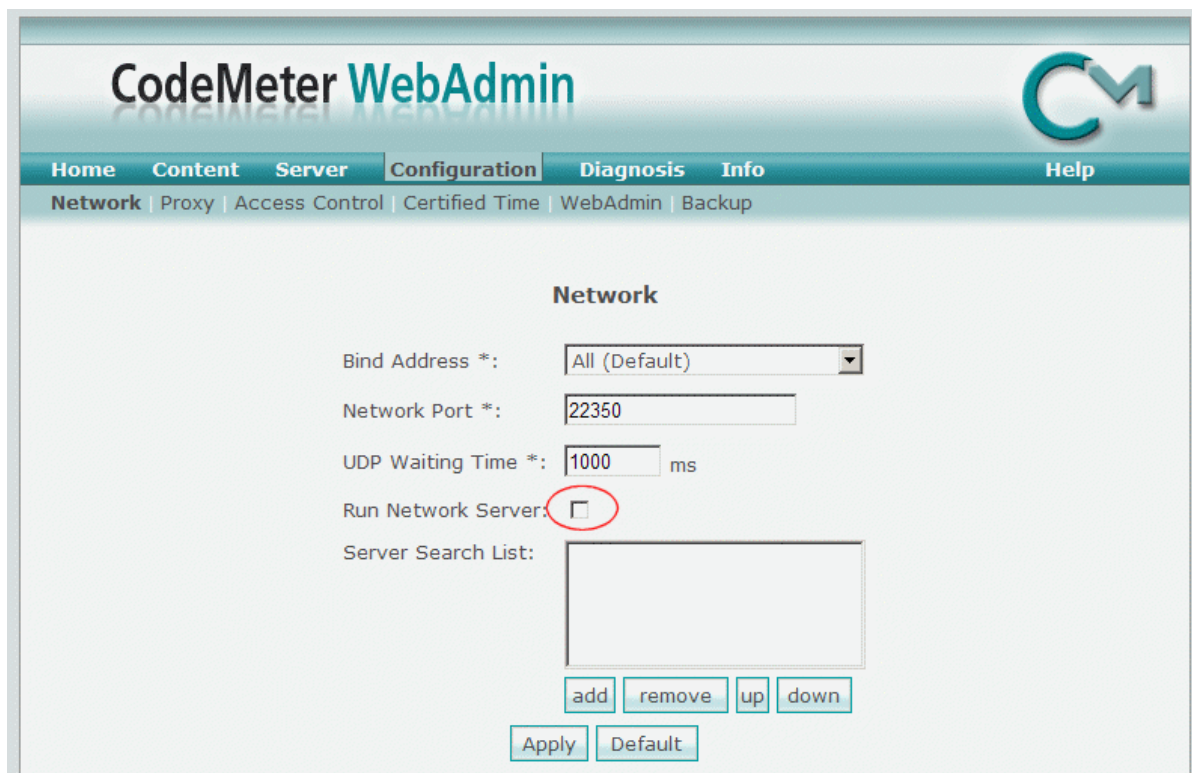


Using the GiS BasePac 7 in a network

You Web-browser opens an you can see the following page:



Select “*Configuration*” and activate “*Run Network Server*” on the displayed page.



After this, click to “*Apply*”.

5. Now you can run GiS BasePac on each PC, of course only at one computer simultaneously, and enter your passwords or DEMO’s and start working.

Using the GiS BasePac 7 in a network



C: Access from multiple GiS BasePac Systems to one CodeMeter Stick with multiple licenses

Example:

You want to use GiS BasePac on 4 different PC's, but only at 2 PC's simultaneously. Every user has the same function level.

The CodeMeter Stick can be loaded with multiple equal licenses. The procedure is as described in **B:**. Because two licenses are stored on the stick, two users can work at once. If a third user tries to open GiS BasePac he will get a corresponding error message.

D: Access from multiple GiS BasePac Systems to CodeMeter Sticks with different licenses

Example:

You want to use GiS BasePac on different PC's. In the punching department the punch option is used, in the embroidery department only lettering is used. To optimize designs, the puncher shall be enabled to use his punch option also at the embroidery departments PC.

To get such a functionality again the programs are installed as described in **B:**. In this case two CodeMeter Sticks are existent, one with punch option activated, the other with monogram activated. At the CodeMeter server **both** CodeMeter Sticks are plugged in. So both license packages are callable at all computers.

You can switch very easily between the licenses in the “*Activate options*” dialog.

The given passwords are kept. Optionally the

“*Activate options*” dialog can be shown at each program startup to choose the desired license. Of course also at this point it is checked that no more licenses are activated at a time as available. In the above example the puncher has to have the GiS BasePac closed in the punching department before opening is in the embroidery department.

